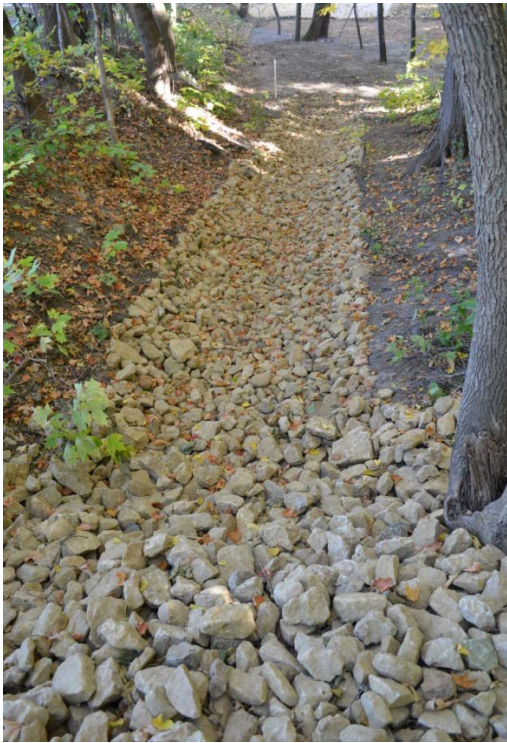


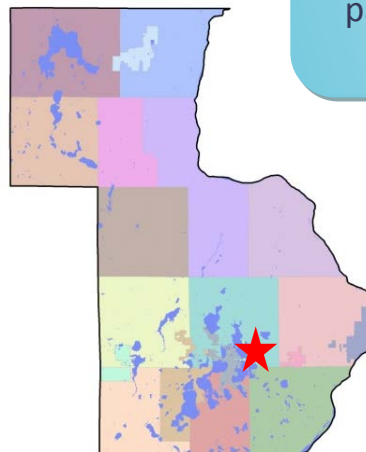
CHISAGO LAKE LUTHERAN CHURCH

GULLY STABILIZATION & INFILTRATION BASINS



This water quality project and parking lot reconstruction was designed for the Chisago Lake Lutheran Church by a Professional Engineer. The Chisago Soil & Water Conservation District helped review and guide the water quality parts of the project and provided some cost share assistance through a Clean Water Fund grant.

The parking lot was resurfaced to drain into a rain garden. If that garden overflows, the excess water runs through a rock-lined channel into an area with larger capacity to hold water while it infiltrates. The project also fixed an existing gully that started at the top of the hill behind the church and ran down beside the parking lot. At the bottom of the hill, the water has a chance to infiltrate or must pass through a sand filter before it reaches the nearby wetland.



Partners:

Chisago Lake
Lutheran Church
Chisago Lakes LID
Chisago SWCD

Pollution Reduction:

TSS: 4,185 lb/yr
TP: 6.2 lb/yr
Vol: 7.2 ac-ft/yr
(BWSR Spreadsheet/
P8 model)

Targeted Water:

South Center Lake

Completion Date:

October 2011

May I Visit?

Yes – The projects are located to the South of the large lower parking lot.