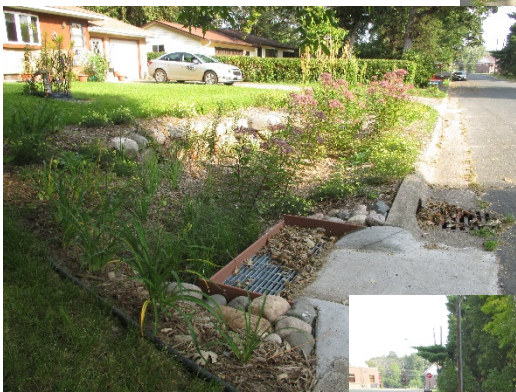


KING'S BLUFF NEIGHBORHOOD RETROFIT

CURB CUT RAIN GARDENS

The dead end street of King's Bluff Road drains to one location in the middle section of the road and outlets directly into Chisago Lake. Five rain gardens were installed to accept runoff from the road and allow it to infiltrate into the ground. Three of the gardens are completely reliant on infiltration as they have no underdrain system. Two of the gardens do have an underdrain that connects to the existing storm drain system. If needed, this drain can be opened to allow water to filter through the soil medium into the drain tile. This is a back-up system to ensure that water drains out within 48 hours. In most cases, opening the underdrain is not necessary.



Partners:

Chisago Lakes LID
Chisago SWCD
Landowners

Pollution Reduction:

TSS: 197 lb/yr
TP: 0.9 lb/yr
Vol: 0.80 ac-ft/yr
(MIDS model)

Targeted Water:

Chisago Lake

Completion Date:

Spring 2015

May I Visit?

Yes – The rain gardens are located on both sides of King's Bluff Road. Please respect private property.

